

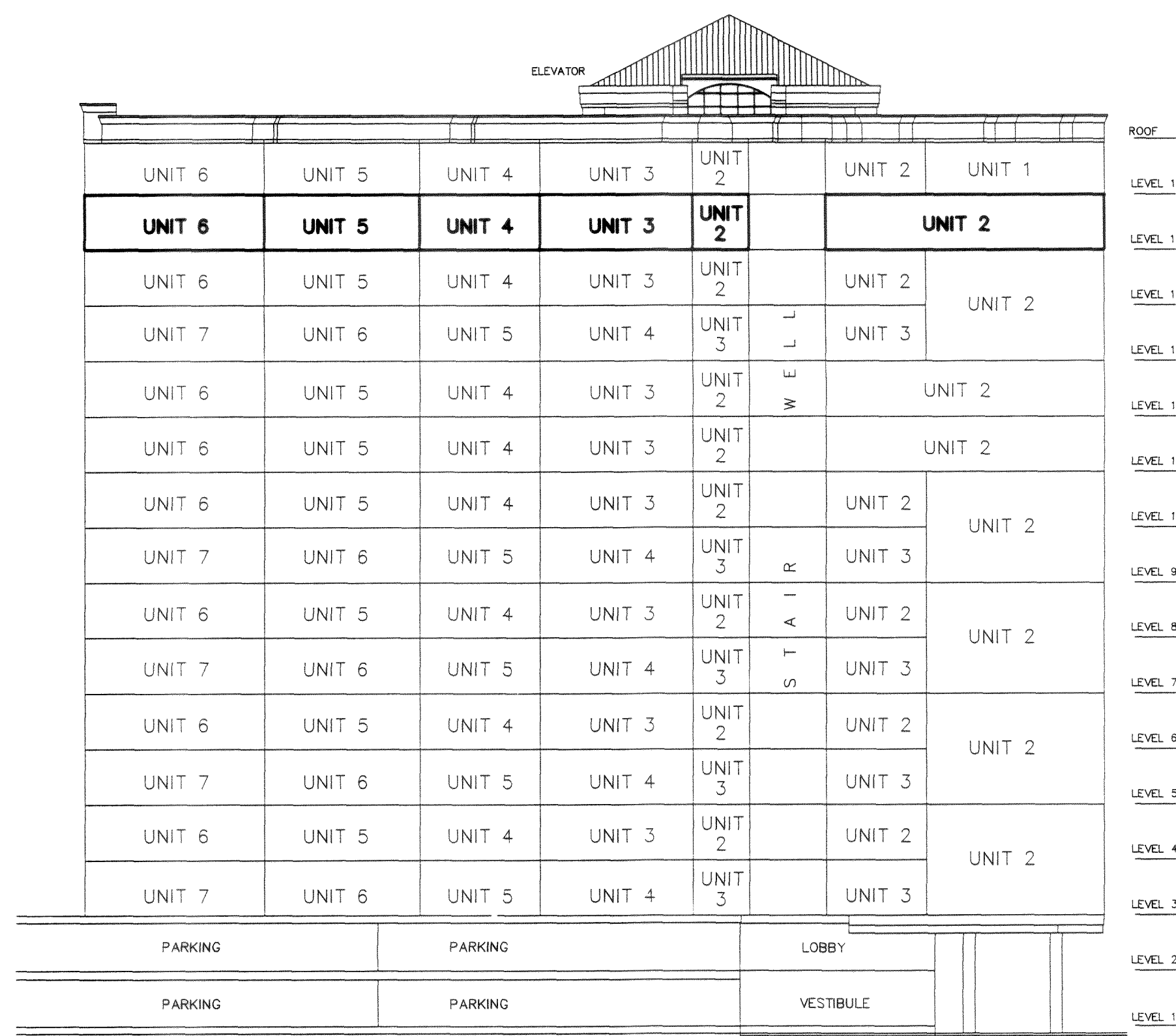
REGISTERED IN THE LAND REGISTRY OFFICE  
FOR THE LAND TITLES DIVISION OF SIMCOE  
(No. 51) AT BARRIE, AT 11:40 O'CLOCK ON  
THE 1<sup>ST</sup> DAY OF August 2006.  
"A.D. Fraton"  
LAND REGISTRAR

**SURVEYOR'S CERTIFICATE**

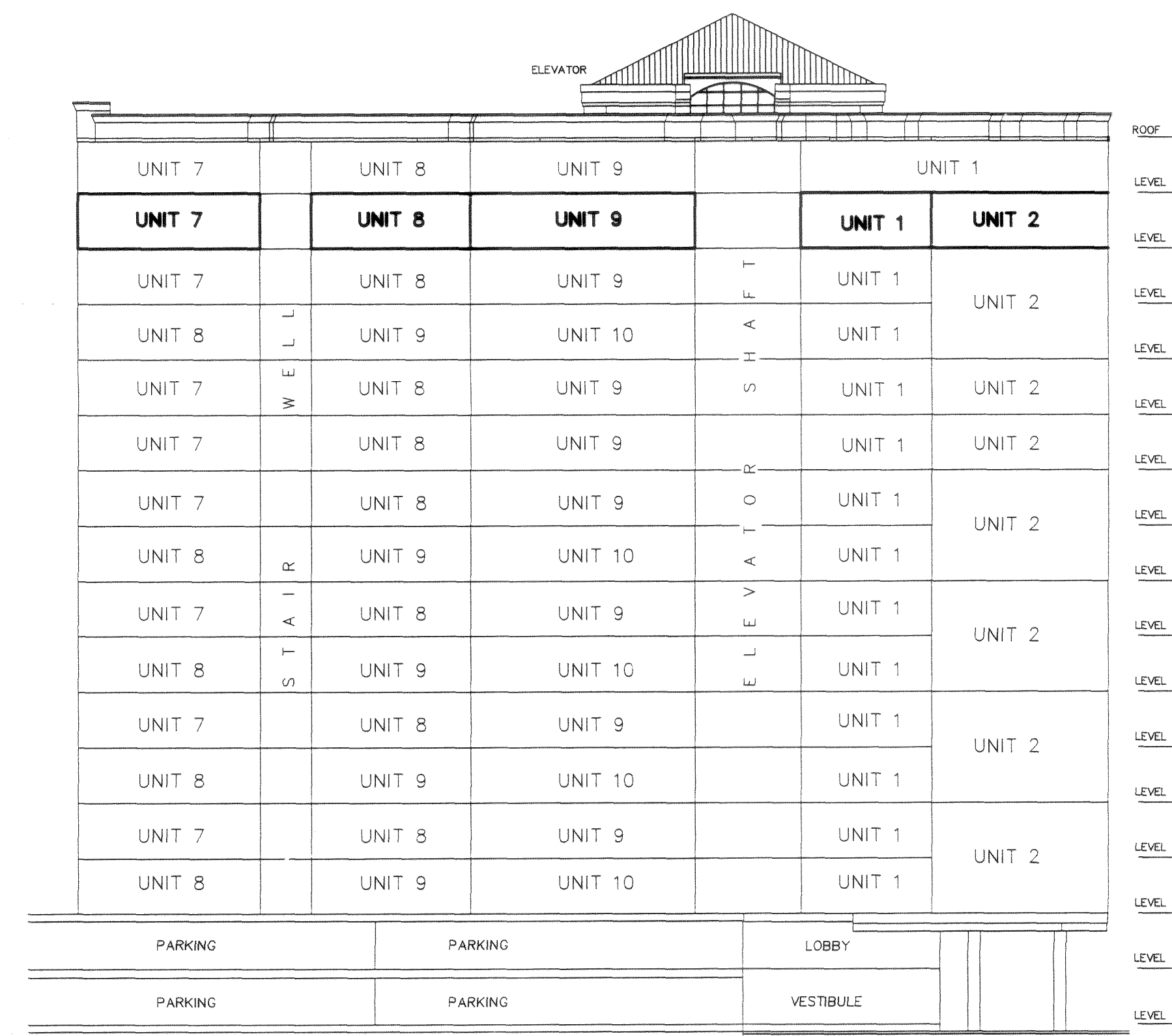
I CERTIFY THAT:  
1) THIS SURVEY AND PLAN ARE CORRECT AND  
IN ACCORDANCE WITH THE CONDOMINIUM ACT,  
1980, THE SURVEYORS ACT, THE SURVEYORS ACT  
AND THE LAND TITLES ACT AND THE  
REGULATIONS MADE UNDER THEM.  
2) THE SURVEY WAS COMPLETED ON THE 6TH DAY  
OF MAY, 2006.  
3) THE DIAGRAMS OF THE UNITS SHOWN ON THIS PLAN  
ARE SUBSTANTIALLY ACCURATE.

July 16, 2006  
DATE  
RUDY MAK  
ONTARIO LAND SURVEYOR

DECLARATION REGISTERED AS No. SC463636

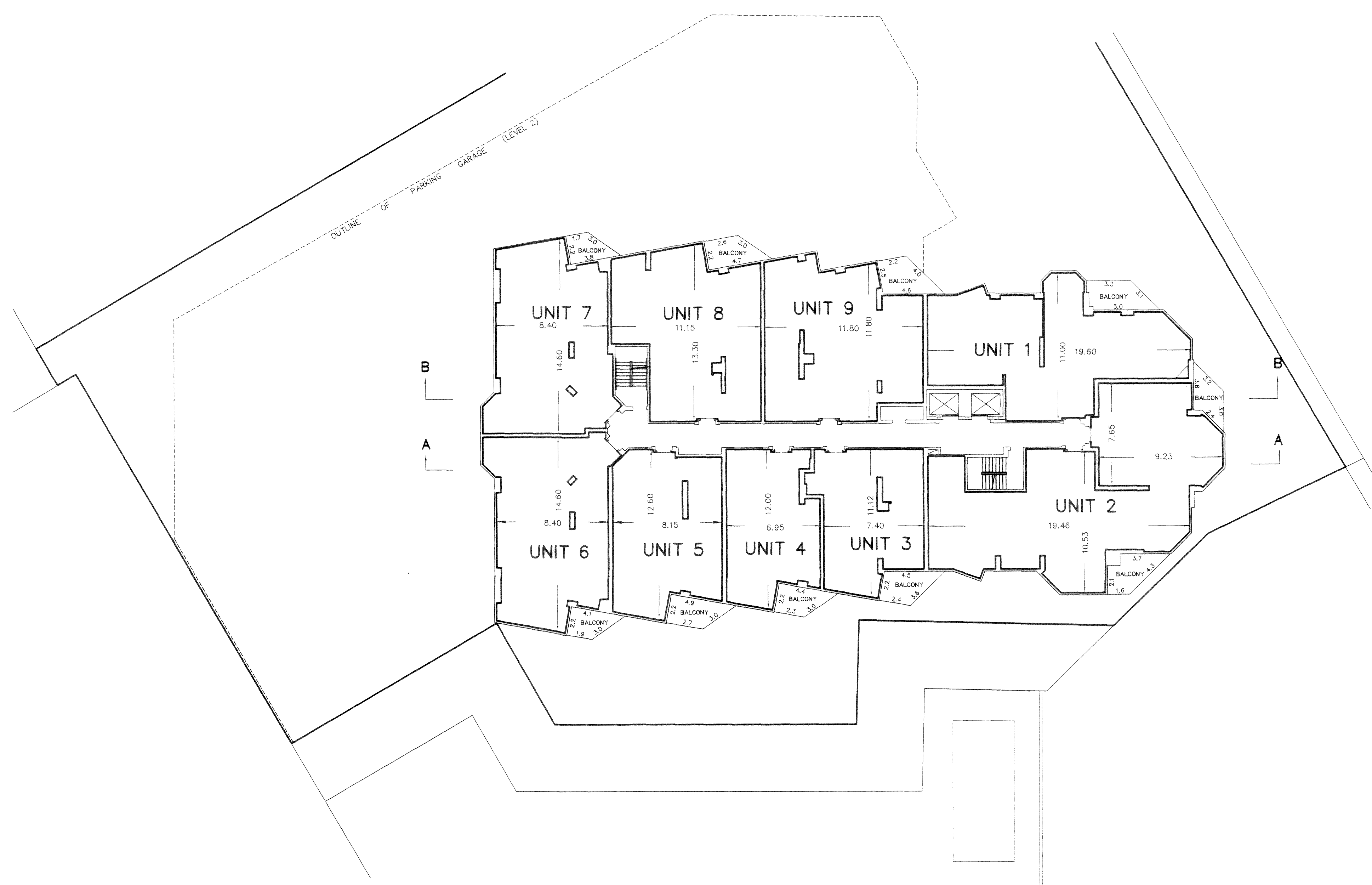
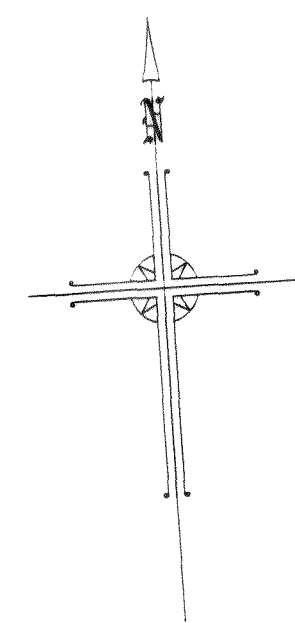


SECTION A-A



SECTION B-B

SCALE 1 : 200  
RUDY MAK, O.L.S.



**UNIT BOUNDARY DEFINITIONS  
FOR RESIDENTIAL AND COMMERCIAL UNITS**

- A THE VERTICAL UNIT BOUNDARIES ARE:**  
(1) THE UPPER SURFACE AND PLANE OF THE CONCRETE FLOOR SLAB.  
(2) THE LOWER SURFACE AND PLANE OF THE CONCRETE CEILING SLAB.
- B THE HORIZONTAL UNIT BOUNDARIES ARE:**  
(1) THE BACKSIDE SURFACE AND PLANE OF THE DRYWALL SHEATHING SEPARATING ONE UNIT FROM ANOTHER SUCH UNIT OR FROM THE COMMON ELEMENTS.  
(2) THE UNFINISHED UNIT SIDE SURFACE OF THE EXTERIOR DOORS (IN A CLOSED POSITION), EXCLUDING ALL APARTMENT HARDWARE, DOOR FRAMES AND WINDOWS (IN A CLOSED POSITION) AND WINDOW FRAMES, AND THE UNIT SIDE SURFACE OF ALL THE GLASS PANELS CONTAINED THEREIN.  
(3) IN THE VICINITY OF DUCTS, PIPE SPACES AND CONCRETE COLUMNS, THE UNIT BOUNDARIES ARE THE BACKSIDE SURFACE OF THE DRYWALL SHEATHING ENCLOSING SAID DUCTS, PIPE SPACES AND CONCRETE COLUMNS.

THE MONUMENTS CONTROLLING THE EXTENT AND LOCATION OF THE UNITS ARE THE WALLS, THE FLOORS AND THE CEILINGS AND OTHER PHYSICAL FEATURES ARE MORE PARTICULARLY DESCRIBED IN SCHEDULE C OF THE DECLARATION.

THE STRUCTURE SHOWN HEREON IS A 16 STOREY BUILDING ON A CONCRETE FOUNDATION.

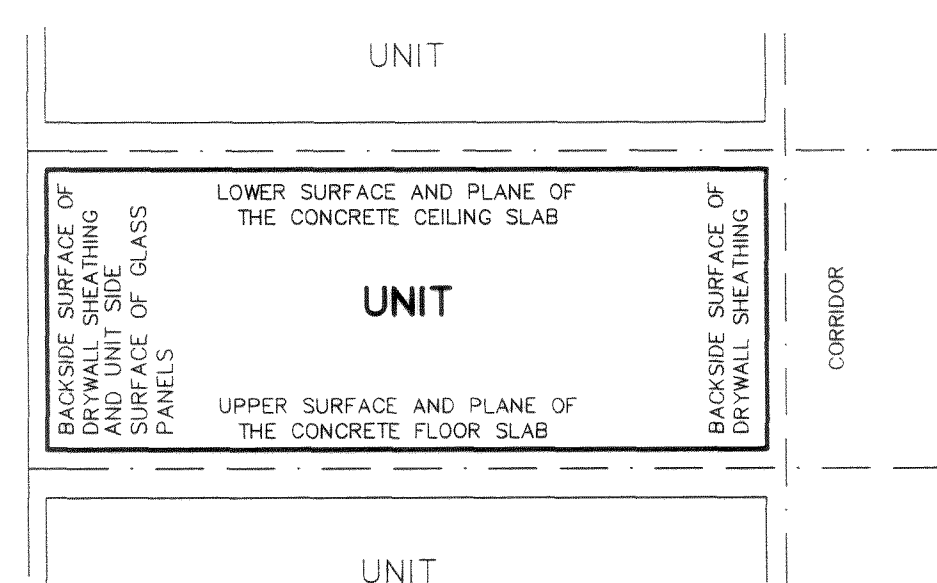
FOR DESCRIPTION OF SERVANT AND APPURTENANT INTERESTS, SEE SCHEDULE A OF THE DECLARATION.

**CERTIFICATE OF DECLARANT**

THIS IS TO CERTIFY THAT THE PROPERTY INCLUDED IN THIS PLAN HAS BEEN LAID OUT INTO UNITS AND COMMON ELEMENTS IN ACCORDANCE WITH MY INSTRUCTIONS.

DATED AT BARRIE  
THIS 1<sup>ST</sup> DAY OF July 2006.

JOB ROSS - PRESIDENT  
POST OAK HOLDINGS INC.  
I HAVE THE AUTHORITY TO BIND THE CORPORATION



SECTION SHOWING TYPICAL  
UNIT BOUNDARIES FOR UNITS 1 TO 9 (INCLUSIVE)  
(NOT TO SCALE)

LEGEND  
— DENOTES UNIT BOUNDARIES AND BOUNDARIES OF THE COMMON ELEMENTS

METRIC: DISTANCES SHOWN ON THIS PLAN  
ARE IN METRES AND CAN BE CONVERTED  
TO FEET BY DIVIDING BY 0.3048.

**RUDY MAK  
SURVEYING LTD.  
ONTARIO LAND SURVEYOR**  
89 BIG BAY POINT ROAD  
BARRIE, ONTARIO L4N 8M5  
(705)722-3845

DRAWN BY: MW | CHECKED BY: RM | FILE No. S-7070C8-C